

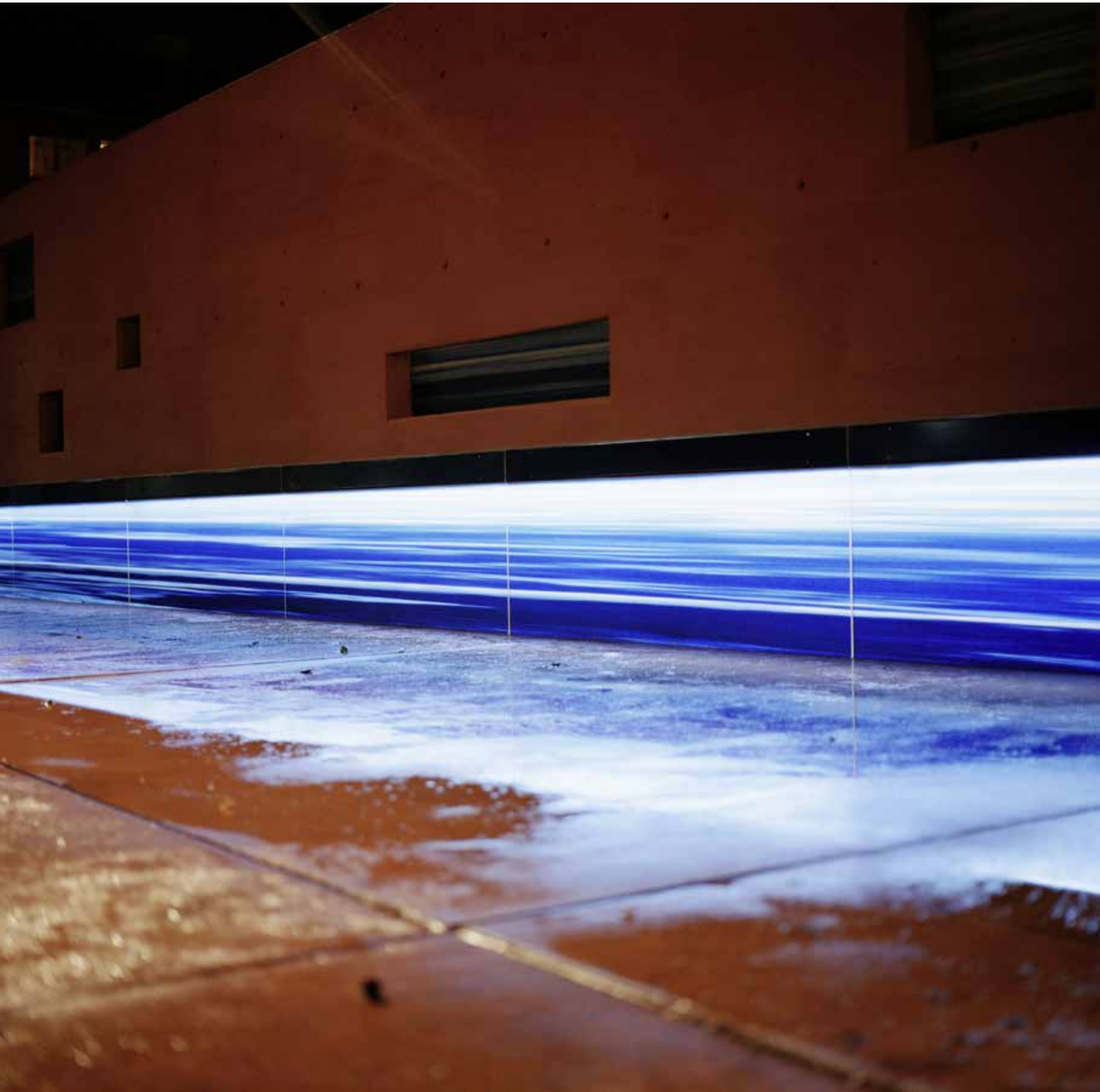
The background is an abstract composition of numerous parallel, slightly curved lines in various shades of blue, ranging from deep navy to bright cyan. The lines create a sense of depth and movement, resembling light rays or a stylized landscape. The overall effect is dynamic and futuristic.

Opfikon

Bele Marx & Gilles Mussard



© photo: Monika Nikolic



OPFIKON

Permanent site-specific intervention, Market Square in Opfikon



The draft extends across the entire side of the garage section of the building facing the square and is made up of two strata: the first an approx. 3 metres high and almost 17 metres long string of pictures which stretches along the outer covering of the building like a kind of plinth, the second the play of lights in the upper part of the building. The picture programme begins on the outer covering of the plinth zone and continues in the various sized openings in the facade. The objective is to convey the impression of an uninterupte projection screen which passes through the whole building and which in the upper part can just be seen in extracts through the window openings. The artists concern themselves with the change in the spatial perception of a building. As has been the case in other projects, the line is used to implement a draft. Here water is taken as the subject matter. The model for the picture subject is alienated, protracted. At the same time the positioning of the picture itself is moved to suggest the movement of water. The glassy band around the plinth evokes the impression of floating whilst the flowing of the upper part sets the building in motion and thus lends the ensemble a visual dynamism.

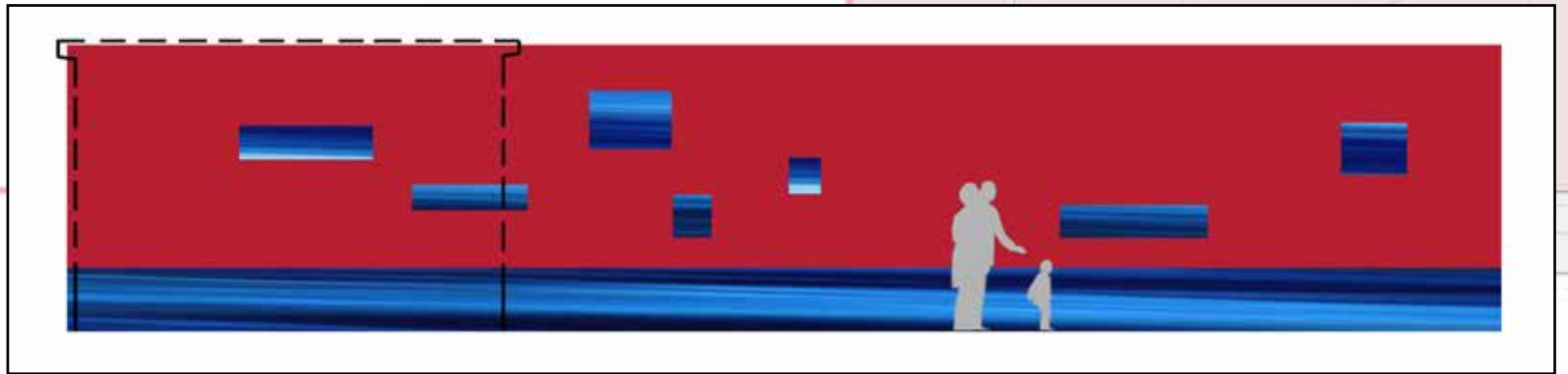
A further depth-giving effect is achieved with a glass thickness of 18 mm and also through the use of satin-frosted glass as the surface. The picture carriers of the window zone are of opaque picture material which finds an optical complement in the plinth zone.

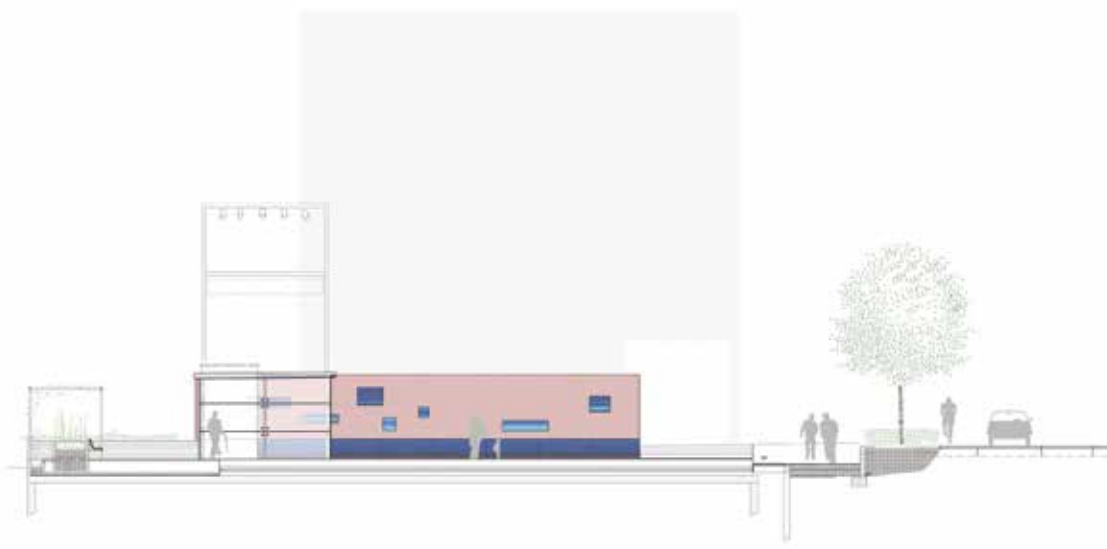
The draft is created and executed by Bele MARX & Gilles MUSSARD using the new technology known as Photoglas which these two artists developed in co-operation with other partners. The team develops artistic projects and realises works for the architectonic sector - such as facade plannings, architecture art, or pilot projects for building exteriors.

Concept Work performed by the Team: „SCULPTURES IN COLOURED LIGHT“ which create new functional possibilities and spatial experiences. Light of natural and artificial origin is part of the concept in order to bring about visual changes both in the interior and on the exterior of an object. The artistic work takes as its subject matter the spectrum of the light and of the colour in combination with the space. The light source is the „motor“ of the sculpture, linked synergistically with the colours. By means of the projected „colour shadows“ it creates an active, pulsating space which at any time can be transformed into a passive space by reducing the intensity of the light source. If natural light is introduced into the equation, the coloured light sculpture - like the sundial - is subjected to a cyclical progression. The visual perception of space changes with the position of the sun and with the resultant impinging light there is an interplay between light and shadow.

Gabriele Ruff







Pilot Project:
permanent site-specific intervention

Art, Infography, Photography, Photo Documentation:
Bele Marx & Gilles Mussard

Production:
Atelier Photoglas

Project:
Marketplace Opfikon, Zürich, Switzerland

Architecture:
Arch. Silja Tillner, Vienna, Austria

Planning and Realisation:
2003/2004

Client:
Stadt Opfikon bei Zürich, Switzerland

Location:
Marktplatz in Opfikon
Schaffhauserstrasse 104
CH - 8152 Glattbrugg, Switzerland

Planning Team:
Arch. Silja Tillner, Arch. Hannes Achamer, Arch. Peter Zoderer, Vienna, Austria

Supervision of Construction:
Arch. Kurt Schwaighofer, Opfikon, Switzerland

Lighting:
Vogt & Partner, Winterthur, Switzerland

Opening:
August 2004



BELE MARX & GILLES MUSSARD
Wollzeile 9/1/30
1010 Wien
Austria

t: +43 - 1 - 585 26 10
f: +43 - 1 - 585 26 10 20
e: atelier@photoglas.com
w: www.belegilles.com